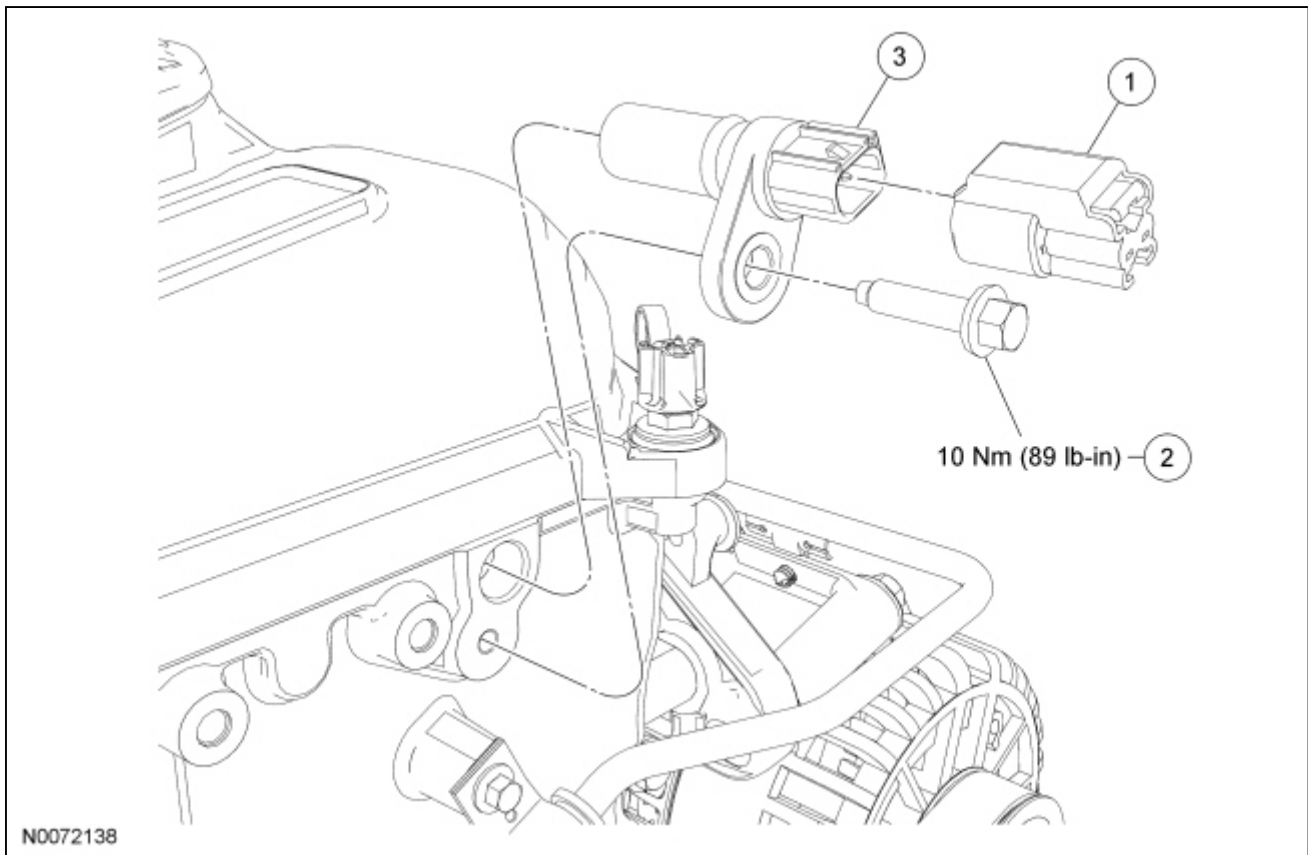


## Camshaft Position (CMP) Sensor — 5.4L (4V)



Item	Part Number	Description
1	14A464	Camshaft Position (CMP) sensor electrical connector
2	N806155	<a href="#">CMP</a> sensor bolt
3	6B288	<a href="#">CMP</a> sensor

### Removal and Installation

1. Disconnect the Camshaft Position (CMP) sensor electrical connector.
2. Remove the bolt and the [CMP](#) sensor.
  - To install, tighten to 10 Nm (89 lb-in).
3. To install, reverse the removal procedure.

